

The FORUM Associative / Manuelle Gautrand Architecture

Posted on April 12, 2016 by IndoPulse // 0 Comments



Courtesy of Manuelle Gautrand

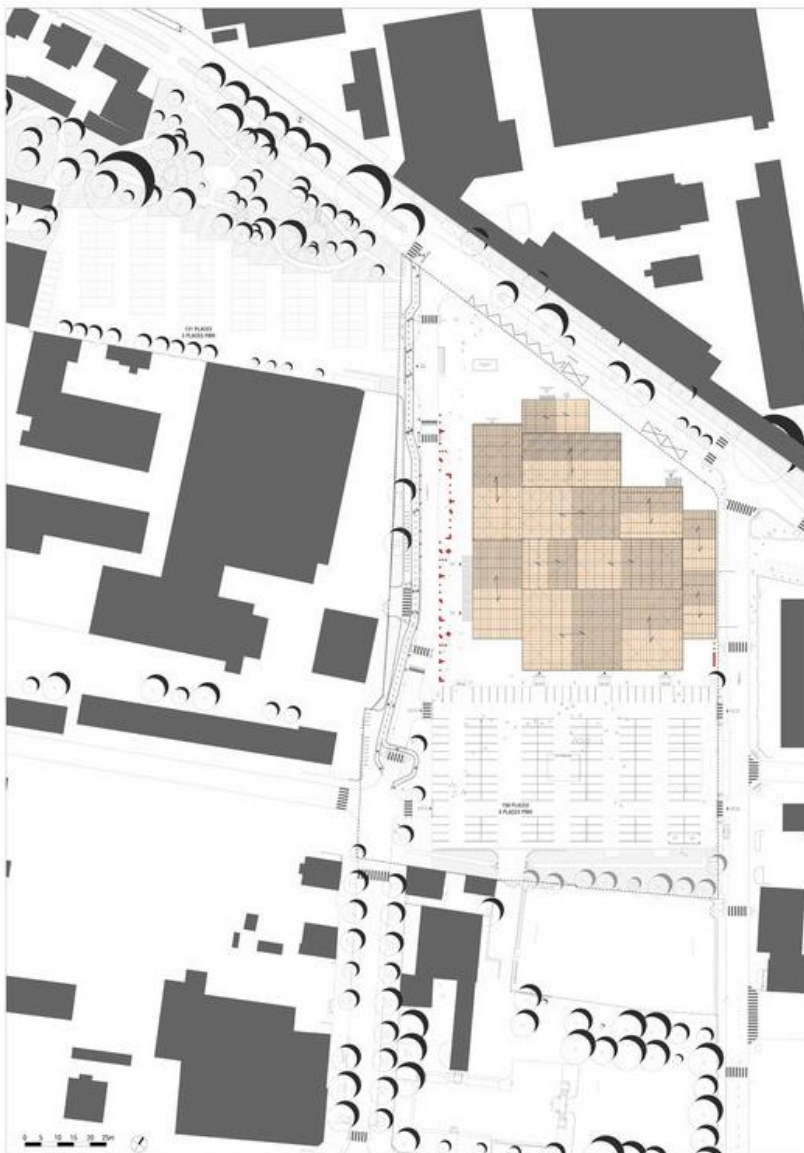
- Architects: **Manuelle Gautrand Architecture**
- Location: **Place Georges Gissy, 68300 Saint-Louis, France**
- Area: **5713.0 sqm**
- Project Year: **2015**
- Photographs: **Courtesy of Manuelle Gautrand**

- Project Manager: **Cécile Ortolo**
- Structure Engineers: **AIC**
- Fluids Engineers: **ALTO**
- Economy: **CHOLLEY**
- Acoustic: **JP LAMOUREUX**
- Fire Safety: **CSD-FACES**
- Roads And Networks Engineers: **OTCI**
- Management And Coordination: **C2Bi (Strasbourg)**
- Technical Controller: **Qualiconsult (Strasbourg)**
- H&S Coordination: **Veritas (Didenheim)**
- Client: **City of Saint-Louis**
- Client Assistant: **S.E.R.S.**
- Work Cost: **9,7 M€ vat excl.**



Courtesy of Manuelle Gautrand

From the architect. Located in Saint-Louis (Alsace, France) in the "Three Borders" region and in the inner suburb of Basel, the "Forum" is a 5,713 sqm cultural facilities designed to host associative, sporting and cultural events.



Site Plan

The wish was to create a unified project, playing on both the multiplicity of the connected volumes, and on a global homogenous design.

The wish was to create a unified project, playing on both the multiplicity of the connected volumes, and on a global homogenous design.



Courtesy of Manuelle Gautrand

The building, made of 13 distinct volumes assembled in one big puzzle at the center of the site, is a harmonious answer to the surrounding individual houses. In the same time, the choice of a unique material for the whole building – a copper-colored expanded metal – makes it original equipment and a landmark in the city of Saint-Louis.

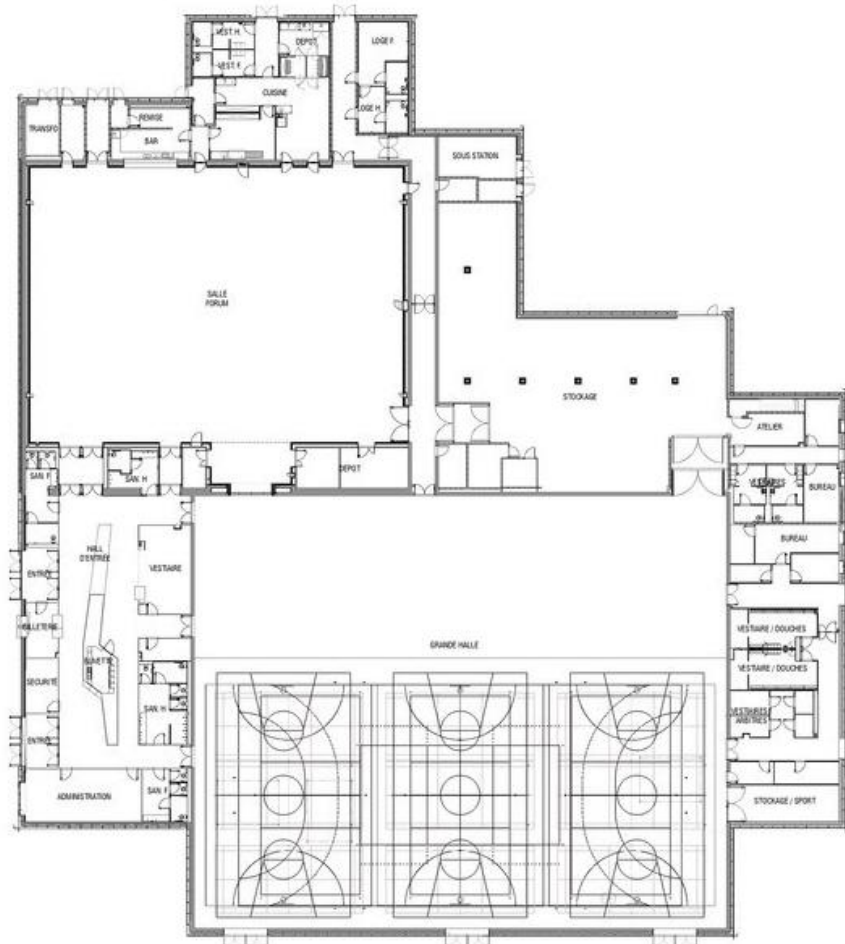


Courtesy of Manuelle Gautrand



Courtesy of Manuelle Gautrand

The inspiration has come from the context, which combines big orangey interlocking tile roofs with some industrial brick chimneys reminding the industrial past of the site.



Floor Plan

Inside the building, the spaces flexibility is maximal: two main adjustable subspaces have been created. The Great Hall (1.870 sqm), dedicated to host sport practice, competitions, shows, concerts or fairs, can be adapted thanks to a mobile bleacher and a set of retractable sliding partitions. The Festival Hall (870 sqm) also hosts shows and fairs, as well as associative events or banquets and weddings, thanks to a kitchen placed right next to it.

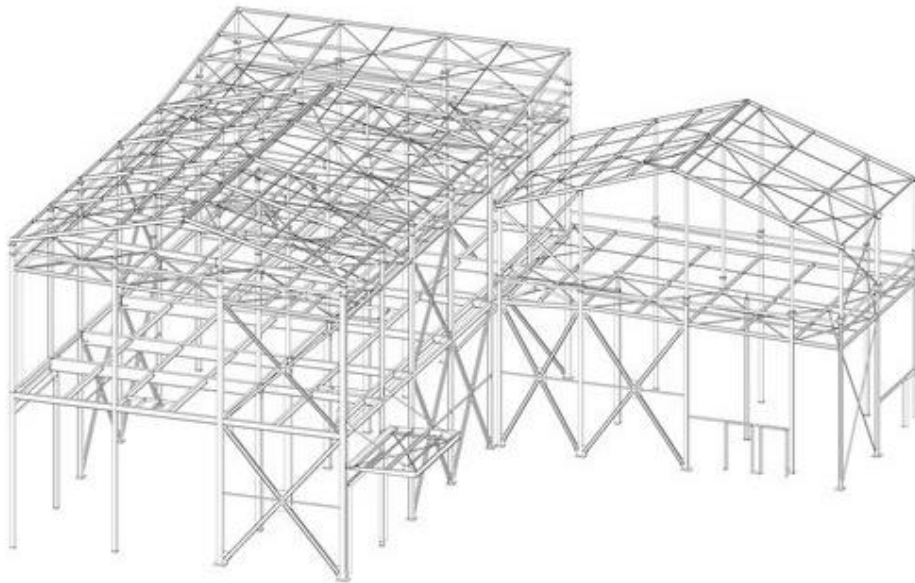


Courtesy of Manuelle Gautrand

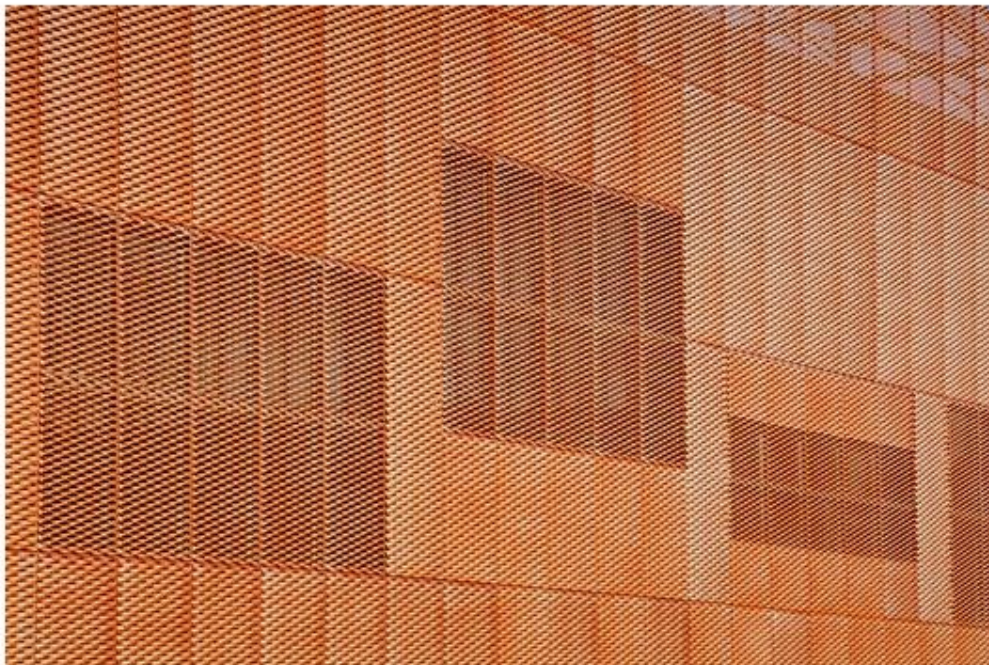
Those two big areas can be independent or opened on each other if the use of the entire building is required.



Courtesy of Manuelle Gautrand



Perspective



Courtesy of Manuelle Gautrand

A dynamic thermal simulation was used to reach a very good energetic efficiency. This level of performance has been achieved thanks to two envelopes with complementary functions: A first structural envelope forming the core and shell while guaranteeing thermal and acoustic insulations. And a second skin of expanded metal mounted over the core and shell, creates a wide plenum allowing great thermal protection.



Courtesy of Manuelle Gautrand

Lien internet : <http://indopulse.com/2016/04/12/the-forum-associative-manuelle-gautrand-architecture/>