

apr 13, 2016

manuelle gautrand  
architecture finishes  
expansive forum cultural  
center

#architecture



#readers



apr 12, 2016

double dream of spring  
installation by michael  
anastasiades for herman  
miller

#design



apr 11, 2016

stefano giovannoni launches qeeboo brand and  
initial products at milan design week

#design

a family of products with a strong communicative  
media power, the initial collection of 25 plastic  
objects, which includes chairs, lighting, »

[#milan design week 2016](#) (48 articles)

[#stefano giovannoni](#) (19 articles)

208



apr 11, 2016

apr 13, 2016



## manuelle gautrand architecture finishes expansive forum cultural center

manuelle gautrand architecture finishes expansive forum cultural center  
all images courtesy of [guillaume guérin](#) unless otherwise noted

**thirteen volumes come together with puzzle-like precision to compose 'forum'**. located in the 'three borders' region in saint-louis (alsace, france), the expansive 5,713m<sup>2</sup> cultural facility by [manuelle gautrand architecture](#) is host to a range of functions and events. amongst a plethora of smaller, function-specific areas there are several larger volumes of note.



'forum'  
image courtesy of [luc boegly](#)

the great hall is a massive gymnasium like area that besides being able to accommodate sports events from badminton to basketball, can also host concerts for up to 2,400 people (standing) or about 1,000 seated. located in an area roughly 1,000m<sup>2</sup> smaller, is the festival hall. **like its larger counter-part it functions as an easily adaptable volume.** however, its proximity to a full commercial kitchen and 600 person banquet hall focuses uses dominantly towards culinary and catering.



aerial view of the center

'forum's' other forms take care of less space intensive, but equally important programs. **special care was taken to organize in such a way that allows fluid circulation between all areas, with each exhibiting traits of highly-flexibility.** outside, an experimental two-part structural envelope gives the center its visual identity, and simultaneously helps it achieve its BBC sustainability label.



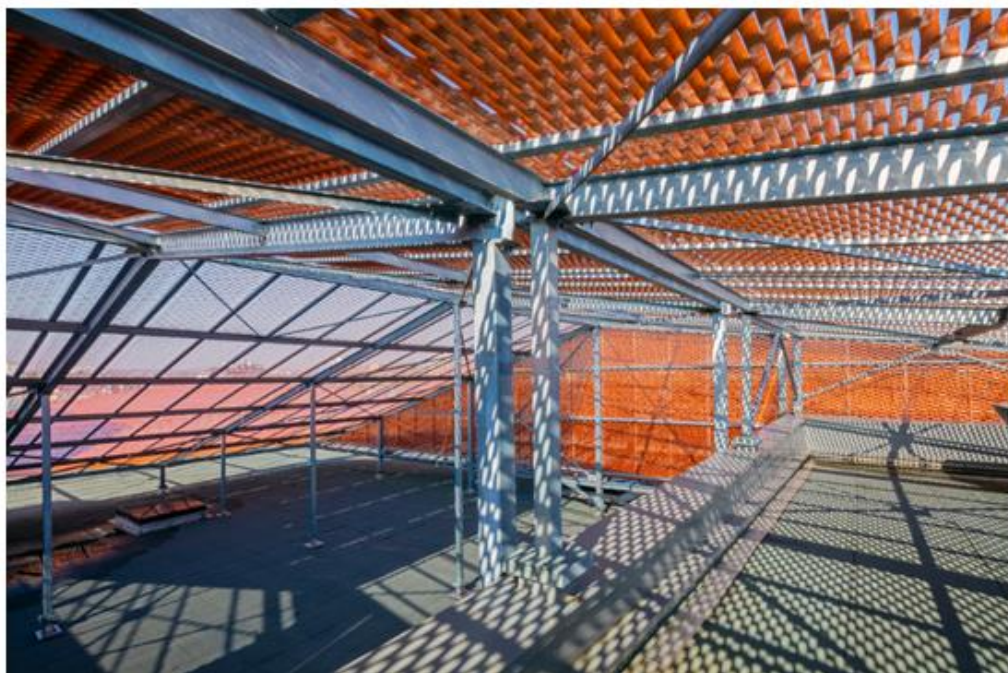
sports courts



the translucent façade is composed of two distinct components



interior signage and wall texturing



external construction detail



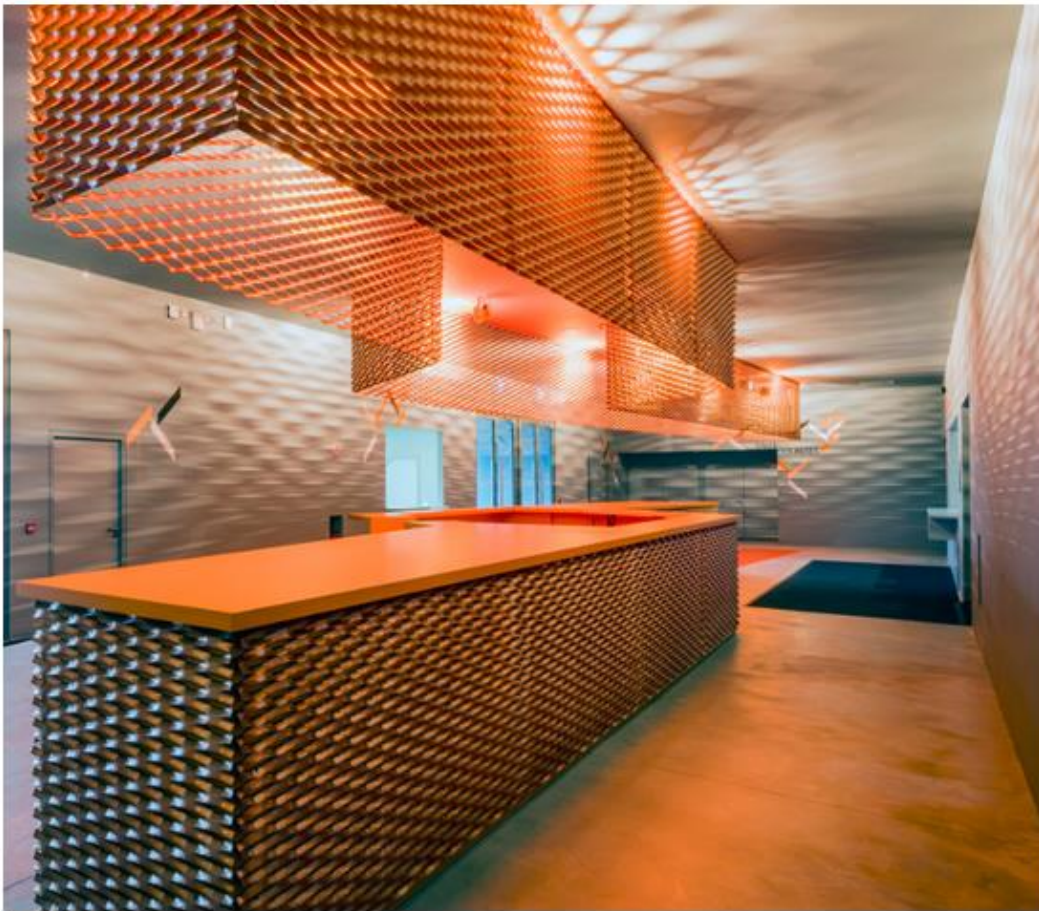
internal space  
image courtesy of luc boegly



façade detail



nighttime view



multi-purpose bar



'forum' cultural center