

Recently published

MARKETS»

Russia an up-and-coming import market

Italy's stone industry in 2011

ARCHITECTURE»

Pinnacle Awards

Natural stone for the bathroom

DESIGN»

Synthetic stones as lights or solar cells

„Thus Spoke the Marble“

MARKETING»

Granite trophies for motorbike competitions

Recycling as prominent topic

FAIRS»

Everyday products in natural stone

Inner Mongolia on the up

TECHNOLOGY»

ART»

„Thus Spoke the Marble“

Exhibit „Rodin, flesh and marble“ in Paris

MISCELLANEOUS»

„We're alive and that's what counts!“

Carrara's Marmotech

Architecture: Marble-look glass in Origami-Folds

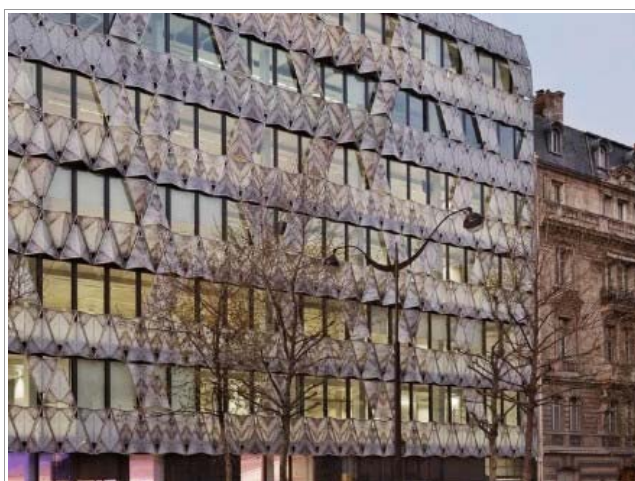


(August 2012) When erecting an office building a mere stone throw away from Paris' famous Arc de Triomphe demands are high: the building must blend in with surrounding façades, preferably in limestone originating from Baron Haussmann's era but nevertheless be contemporary in style and open, thus be made of glass.

Manuelle Gautrand Architects took an interesting middle path for the French headquarters of Barclays' Capital Bank, No. 36 Boulevard de Friedland: the façade is clad in marble-look glass. „Elegance and modernity“ was the declared aim according to the planners.

To dispel confusion: the stone is not stone at all but a thin film of a marble lookalike printed on glass as if millimeter-thin stone slabs had been affixed to the glass.

The architects rejected the idea of using real stone sheets: the uncertainty was too great that such a construction would not stand the test of time.



Another argument for the film-solution was the exact planning of color schemes of the stone and its veins, both of which were meant to be accentuated toward the center of the building but fade toward the perimeter.

- Archives (445)
 - Markets (66)
 - Architecture (91)
 - Design (99)
 - Marketing (30)
 - Fairs (42)
 - Art (51)
 - Miscellaneous (78)
- Company news (11)
- List of trade fairs
- Newsletter
- Who we are

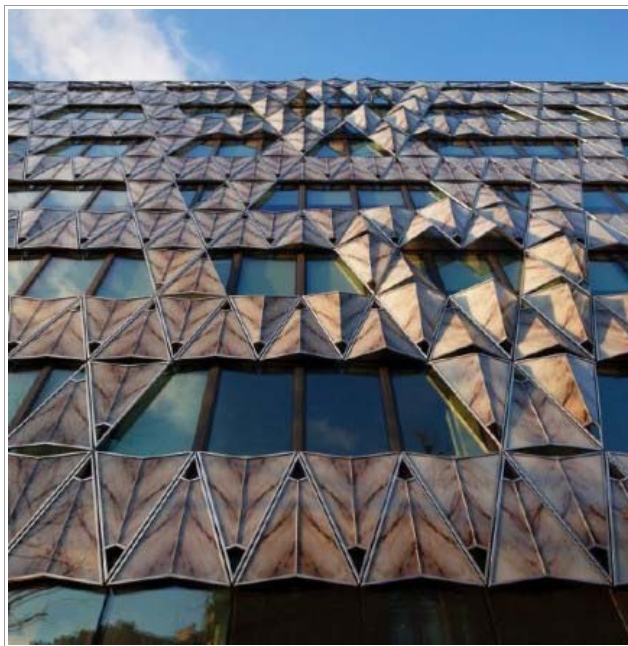
BIPV Glass Markets Report
Get Full Report Learn More
www.NanoMarkets.net

Jordan Parnass AIA LEED
Award-Winning Retail
Architecture and Customer
Experience Design
www.jpda.net

AdChoices



But the building's façade is not only an eye-catcher. The pleats named after the Japanese art of folding paper, which gave the building its name „Origami Building“ are striking.

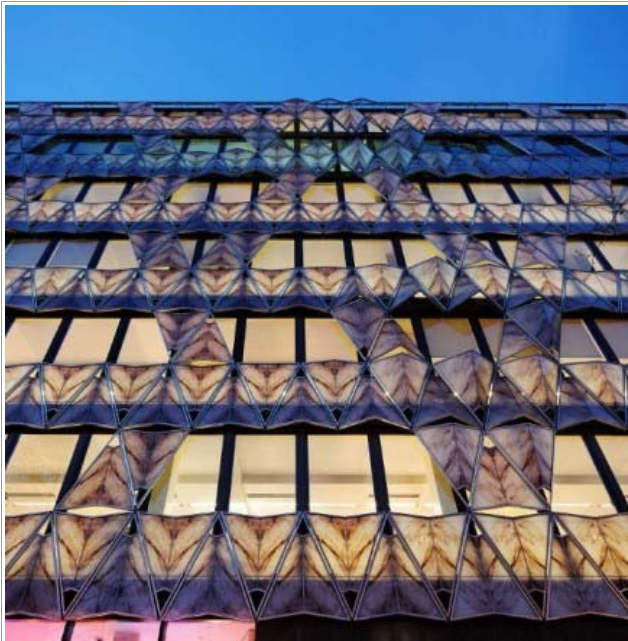


A variety of effects are created through the „folded“ panes with stone-like film application: depending on the angle of the sun's rays, the color of the material as well as the play of light and shade vary.





The outer glass is also visual and light protection. But it must be spectacular when the sun's rays penetrate the building through marble veins. The open book pattern was chosen in which the grain is mirrored on neighbouring panes.

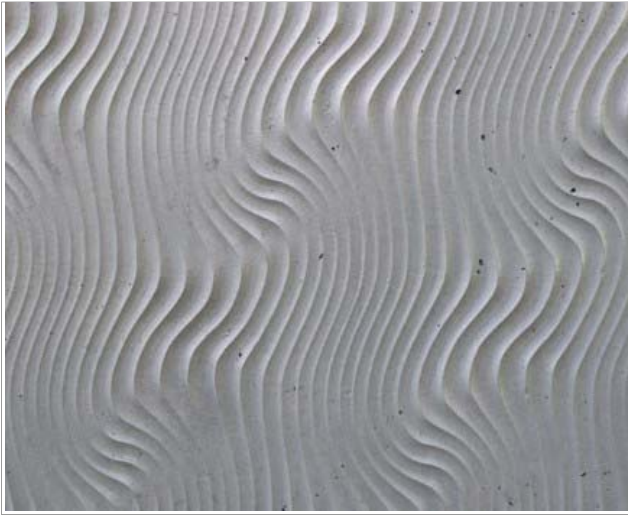


And the appearance of the building is entirely different at night.



The court façade offers more distinct characteristics, here in cast concrete.





„Origami Building“ complies with the stipulations of the High Environmental Quality (HEQ) seal ranging from use of sustainable products to noise-protection during the building phase all the way to environmental compatibility.

The complex houses high end offices and contains a recreational area including cafeteria, meeting rooms and technical area, an archive and 85 parking spaces. The lobby bridges the front and mews.

A roof-top terrace offers a breath-taking view over the city's buildings.

[Manuelle Gautrand Architecture](#)

Photos: Vincent Fillon / Manuelle Gautrand

