

Just three reasons to switch on to Eaton



- [Home](#)
- [Update](#)
- [Articles](#)
- [Subscribe](#)
- [Media Pack](#)
- [About Us](#)
- [Contact](#)

Update

- [Current](#)
- [Archive](#)

[Manuelle Gautrand Architecture's "origami" building, Paris](#)

24/01/12

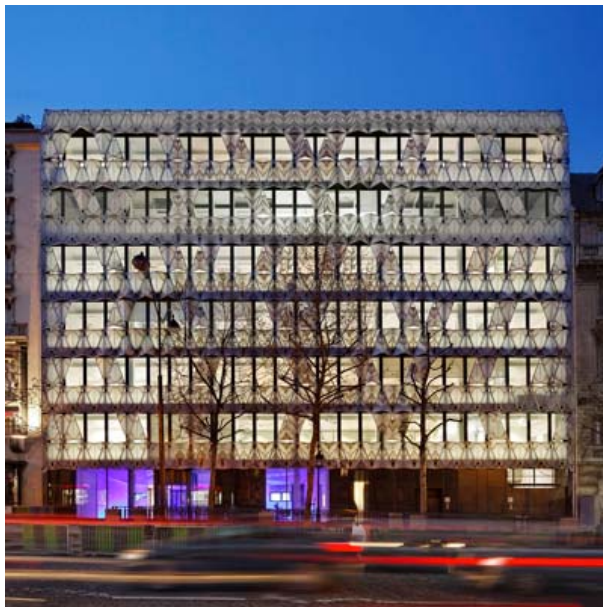
[<<back to list](#)


Origami, marble-printed street elevation (ph: Manuelle Gautrand)

Manuelle Gautrand Architecture have completed a 6,000 square metre office building within 200 metres of the Arc de Triomphe in Paris. Developed for Grecina, the building now houses the French headquarters of Barclays Capital Bank.

The project involved the demolition of a 1970s office building with the retention of a four level underground parking lot. The newly designed area above ground includes 300 workspaces, luxury offices, a cafeteria and relaxation area, six meeting rooms, computer rooms, an archive store as well as two courtyards and a roof-top garden/ terrace which has views over this prestigious location.

The street facade and the rear elevation have been conceived very differently. The 30 metre main facade is mostly constructed out of glass. The glazed curtain wall is partially covered with a second-skin of glass screen-printed with a marbling effect. The whole effect is of an undulating, 'origami' bas-relief. The rear, however, is much more private and solid as the elevations are made from in-situ concrete engraved with a crosspiece pattern and coated with a holographic glaze.



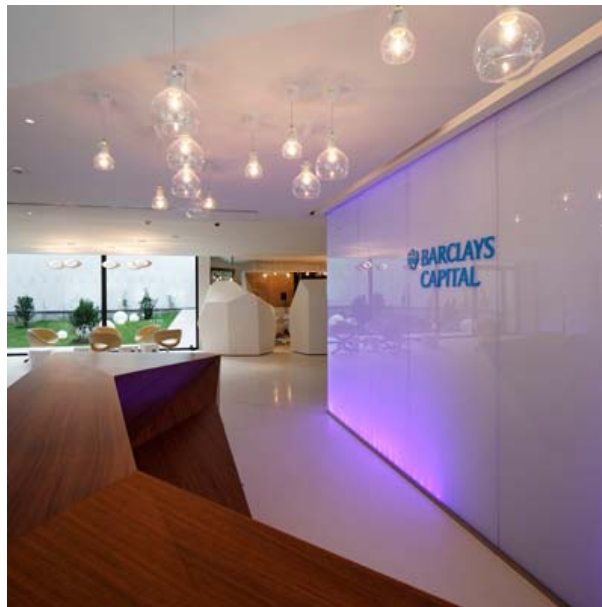
Main facade at night (ph: Manuelle Gautrand)



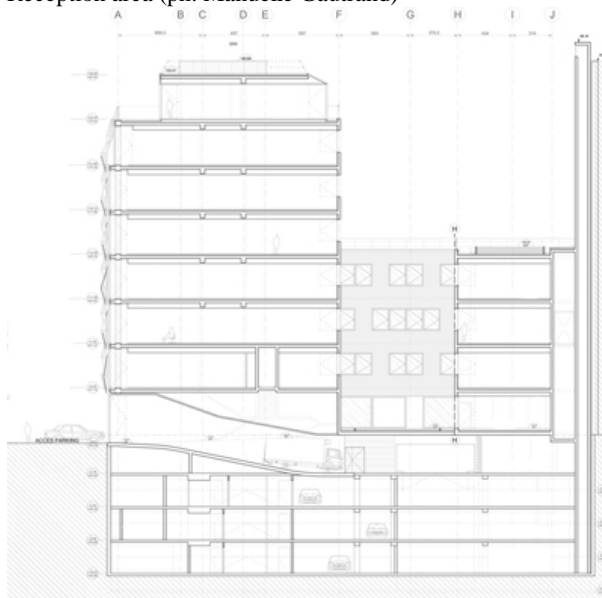
View of the rear elevation from one of the courtyards (ph: Manuelle Gautrand)



Internal view of the second skin on the front elevation (ph: Manuelle Gautrand)



Reception area (ph: Manuelle Gautrand)



Cross-section

beauty is in the finer details

high specification flat roof skylights

Sunsquare Limited

Click here for more info

[Terms & Conditions](#) | [Privacy](#)

Name (required)

Mail (will not be published) (required)

Submit Comment