

Manuela Roth

CONCRETE

Architecture & Design

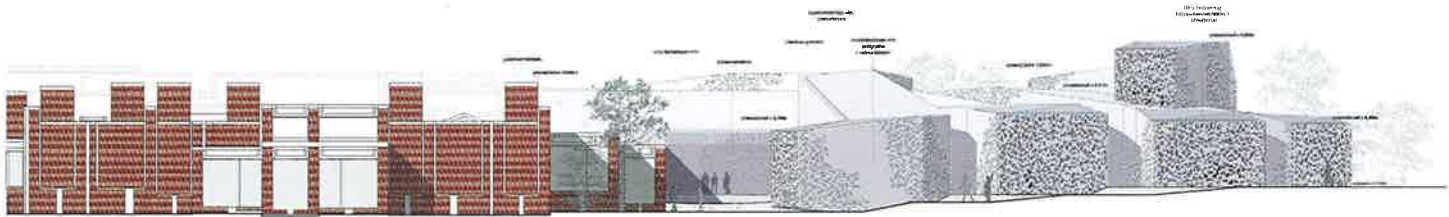
BRAUN

LaM – Lille Museum of Modern, Contemporary and Outsider Art

Manuelle Gautrand Architecture

Location	Villeneuve d'Ascq, France
Completion	2010
Client	Lille Métropole Communauté Urbaine
Type of use	Museum
Gross floor area	3,200 m ² (extension)
Concrete used	In-situ concrete, pre-cast concrete panels (Ultra-Performing Fibrous Concrete UPFC)
Photos	Max Lerouge, Vincent Fillon (p. 67)

Manuelle Gautrand's extension with its site-specific volumes deploys a topographic presence that aims at immersion in the site. The new extension wraps around the existing brick building in a double splay of long volumes. On the one hand, the new wing develops in narrow folds, opening onto a central patio; on the other hand, it extends in larger folds, which open up at the ends. The exterior envelopes are sober, made of plain untreated concrete, with perforations to protect the interior from sunlight. The Moucharabieh panels were prefabricated of Ultra-Performing Fibrous Concrete (UPFC). Each screen panel is hung from a concrete beam and tied at its base to the slab. The roof of the extension continues from the elevations with sunken gutters and a resin finish to match the color of the concrete shells.



↑ Elevation south façade
↓ Exterior view from south

→ Detail façade







↑ Interior view towards façade
↓ Lit façade at night



↑ Interior view, fragmented light
→ Detail "moucharaby" façade



