

**MORFAE** the shape of things: architecture, design, interior, art, style

[project list](#) [architecture & design](#) [art](#) [fashion](#) [what's on](#) [submit](#) [advertise](#) [about](#)



16.11  
2012

Tweet

J'aime

1

## Music and Dance Centre by Manuelle Gautrand Architecture in Ashkelon, Israel

*Ornamental metal panels carry large openings accentuating the vertical movement of the project.*



Music and Dance Centre by Manuelle Gautrand Architecture in Ashkelon, Israel.

CLICK IMAGES TO ENLARGE

The Music and Dance Centre is a two-purpose building featuring two distinctive wings: one dedicated to music and the other one to dance. One volume of the building is a home to Music Conservatory, whereas the second volume hosts Ballet Academy and School of Dance. Moreover, the project comprises libraries, studios for dance and music students, exhibition spaces, cafeterias.

Both spaces share a common function; each of them comprises a large theatre. These professional stages are designed for a daily use, for both

**MORFAE** the shape of things: architecture, design, interior, art, style

project list architecture & design art fashion what's on submit advertise about contemporary artists.

The project seeks to install the functions in an elevated verticality. Each function is visible and is a part of the sculptural assemblage that is being sought. At the top of the tower, guests will be able to take in panoramic views of the surrounding sea and the area, while relaxing on a terrace.

The main inspiration was to create a festive and lively place. A large open space is situated at the top of the building. This space does not have any particular function or program as it is designed to be specifically appropriated and used by the artists for exhibitions, festivities, ephemeral installations.

The façade of the building consists of metal panels with large round openings; these are beautiful generous and regular windows that will offer fantastic views. They gradually descend along the façades as if to accentuate the vertical movement of the project.'

Text by Manuelle Gautrand Architecture

ARCHITECT: Manuelle Gautrand Architecture, Paris, France. PROJECT MANAGER: Simon Clemencin. ASSOCIATE ARCHITECTS: Bea Town Planners, Israel, Batia Svirsky, architect. CLIENT: The Ashkelon Development Company for the Town of Ashkelon. LOCATION: Ashkelon, Israel. DESCRIPTION: Cultural. STATUS: Design Phase. AREA: 5000 sqm. DATE: 2011-12. No part of this web site may be reproduced or transmitted in any form or by any means, electronic, mechanical, photocopying, recording or otherwise, without prior permission of Morfae and the copyright owner.



An overview of the 'La GAITE LYRIQUE' Concert Hall by Manuelle Gautrand in Paris, France



Alesia and Mistral Cinema Theatres by Manuelle Gautrand Architecture in Paris, France



The restoration of 'La GAITE LYRIQUE' by Manuelle Gautrand in Paris, France



Europa City by Manuelle Gautrand Architecture in France



The flexible stages of 'La GAITE LYRIQUE' by Manuelle Gautrand in Paris, France



Seoul Louis Vuitton Maison by Manuelle Gautrand Architecture in Korea



TENA TOWER – TENA RIVERS' mixed use development in Ouagadougou by Manuelle Gautrand Architecture



'La Cité des Affaires' Office Building by Manuelle Gautrand Architecture in Saint-Etienne, France



Mobility and flexibility of the public spaces of 'La GAITE LYRIQUE' by Manuelle Gautrand in Paris, France



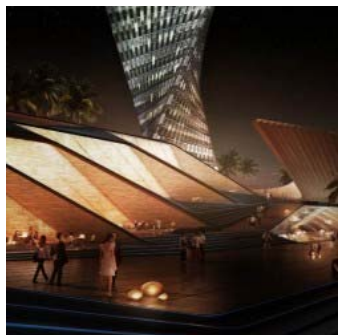
Enzo Hotel by Manuelle Gautrand Architecture in Paris, France



'MUCA' music and cultural centre by Cor & Partners in Algueña, Alicante, Spain



LaM – Lille Museum of Modern extension: reinvented landscape by Manuelle Gautrand Architects



Xiamen Dream City by SDA | Synthesis Design + Architecture in China



AMA House by Katsutoshi Sasaki + Associates in Aichi, Japan