

BREEAM Brussels training 1st BREEAM assessor training course Brussel Belgium B
www.clamour.eu Clamour Geoffrey Architecte www.clamour.eu
Architecture d'intérieur recomposition des volumes appartement, maison, bureau... [ww](#)

d

designitecture.com

J'aime 1 k

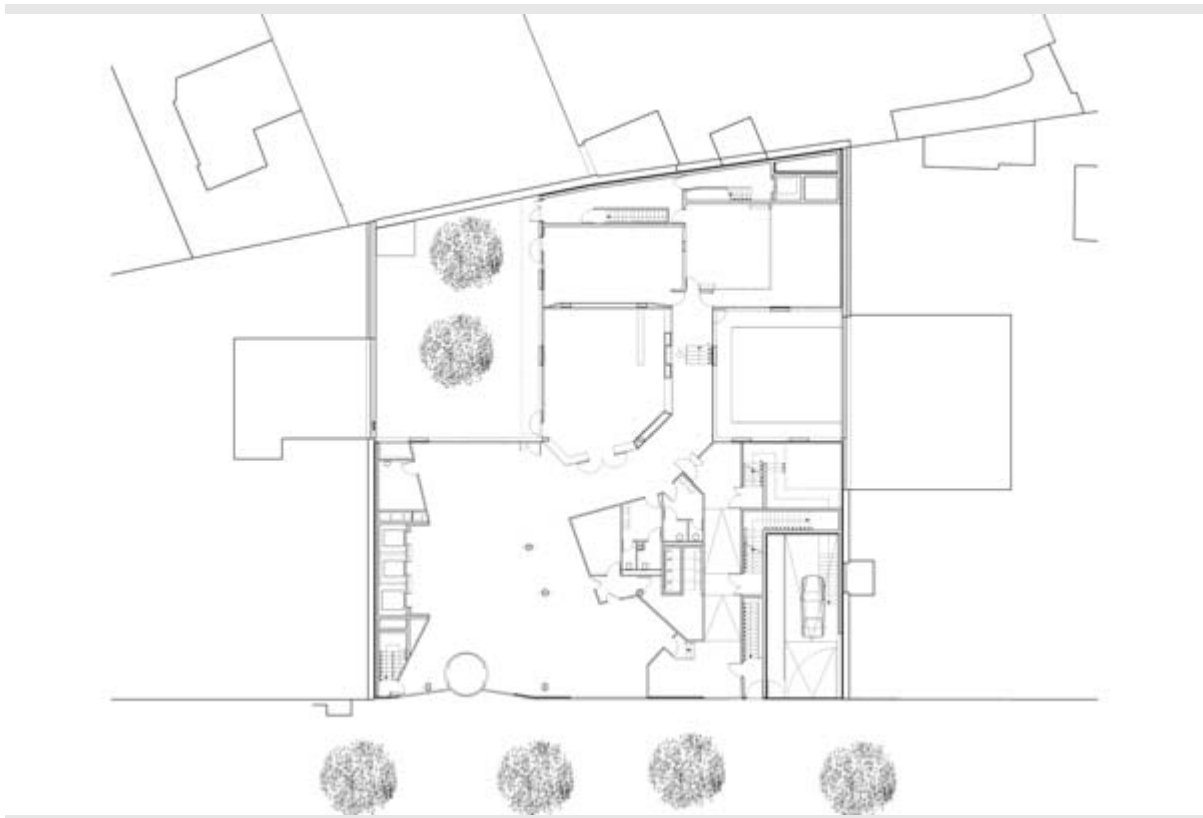
THE LIBRARY

SUNDAY 18 MARCH, 2012

Origami Building by Manuelle Gautrand Architecture

The project designed by Manuelle Gautrand consists in the construction of an office building that hosts the French headquarters of Barclays Capital Bank.

Tweet 9

[email](#)

1 2 3 4 5 6 7 8 9 10 11 12

Architects: Manuelle Gautrand Architecture**Location:** Paris, France**Year:** 2011**Pictures:** © Vincent Fillon

The project was implemented in two parts: the main building on a 20 meter-wide stripe on the avenue, and an extension in the rear, between two courtyard gardens. At the ground floor level, the lobby **plays on transparency** between the street front and the main garden. The building in the rear of the lot is more private, and it is there that the cafeteria and meeting rooms are laid out, with garden space on both sides.

The unusual location of the site led the architect to design a project that would take advantage of the view and would be immersed into the **natural light**. An emblematic showcase of the building is the main façade composed by mostly glass, partially covered with a **second-skin of screen-printed marble pattern**. The panels are composite of a film of marble mounted on a thin layer of glass. They are symmetrical and are folded and assembled by two, forming an “open-book” pattern that highlights the

design of the veins of the marble. This second skin is translucent and acts as a breast wall to ensure privacy as well as **filter daylight**, creating a soft interior atmosphere.

The project then **develops into the depth** of the site with the same objective of clarity while adding a strong presents of plants. The offices roofed with large lawns weave around the two courtyard gardens. The lobby functions as a meeting point of these two atmospheres – the urban and sophisticated of the main façade, and the more private and verdant of the other side of the building. The interior spaces were designed in a contemporary spirit, highlighting the luminous atmosphere with light-colored and soft materials.



PROJECT CREDITS

Architects: Manuelle Gautrand, principal architect; Yves Tougard, architect project manager

Investor: Gecina

Client's Representative: Kaufman & Broad Development

Structure: Khephren

Facades: Arcora

Fluids: Alto

Economist: Georges Ventre

Acoustics: Lamoureux

Interior design for Barclays: DGM Associés

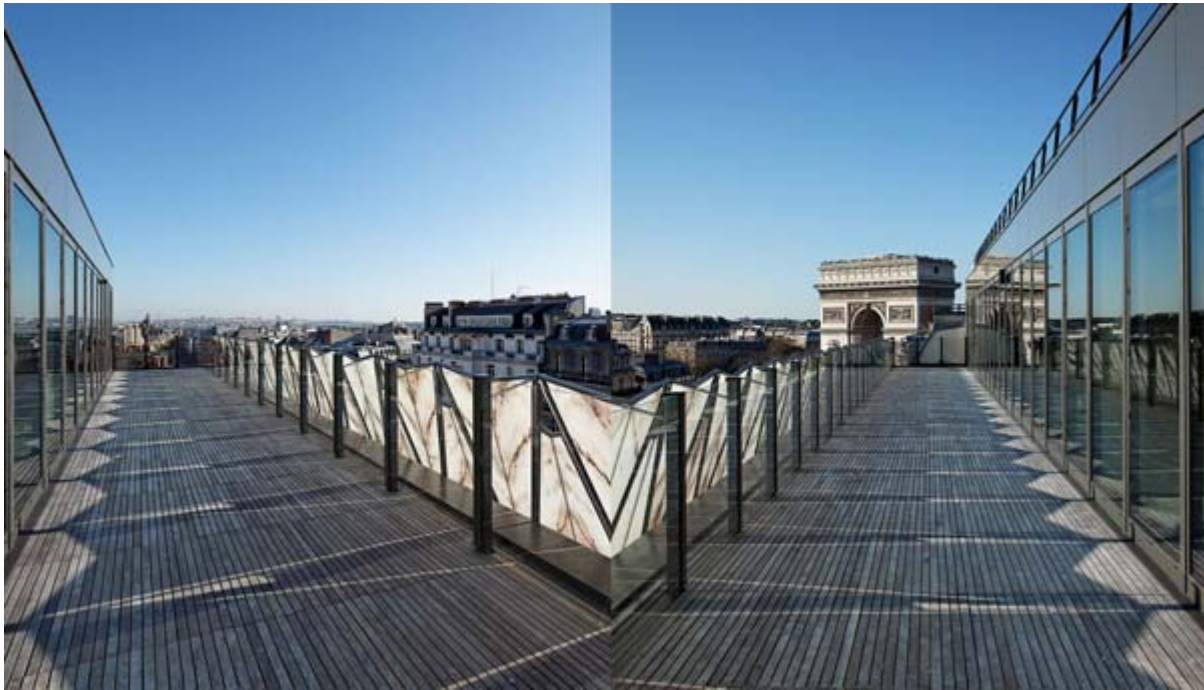
Consultancy for green building standards: Cap Terre

HQE (High Environmental Quality) certification: Certivea

Main structure: Colas

Curtain wall façades and exterior joinery: Schüco

Double-skin, screenprinted glass and marble façades: Simetal



Comments

comments

Master in Architectural Management and Design

Study in Madrid and London

Learn from the World's Top Architects

 [Apply Now](#)

Tags: [architecture](#), [Architecture Building](#), [Commercial](#), [Manuelle Gautrand Architecture](#), [Offices](#), [Origami Building](#), [Origami Building by Manuelle Gautrand Architecture](#), [Paris](#)