

Coating Facade

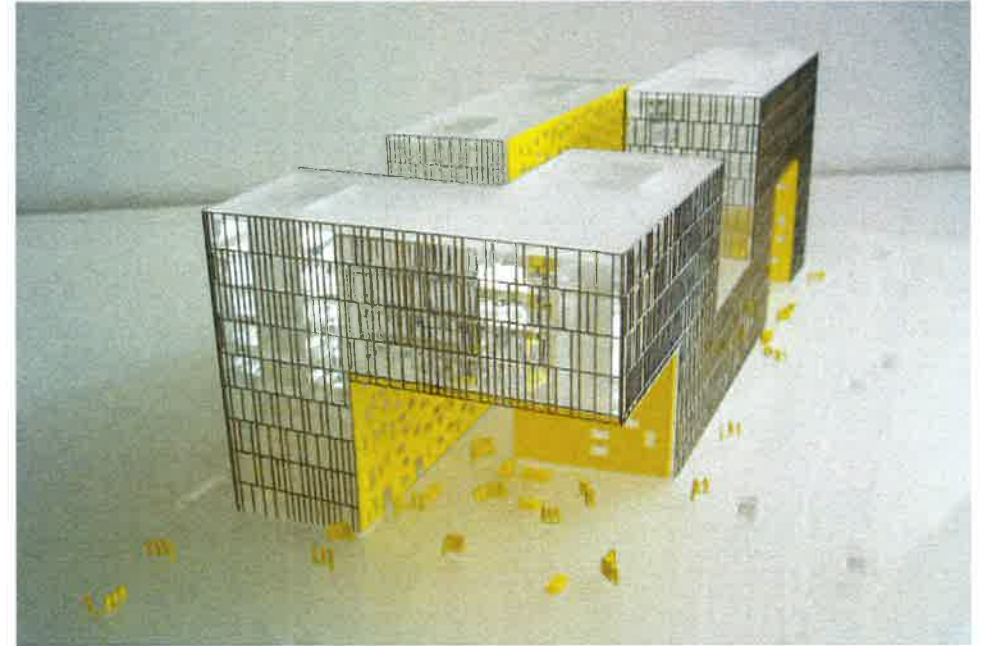
Aztec Serpent

La Cite des Affaires

Location *Paris, France*
Designer *Manuelle Gautrand Architecture*
Client *Altorco-Cogedim*
Photography *Philippe Ruault*
Material *Aluminum Alloy, Thermal Insulating
Material, Steel Lacquered Sheet*



Hertz
OCCASIONS
04 77 82 21 51

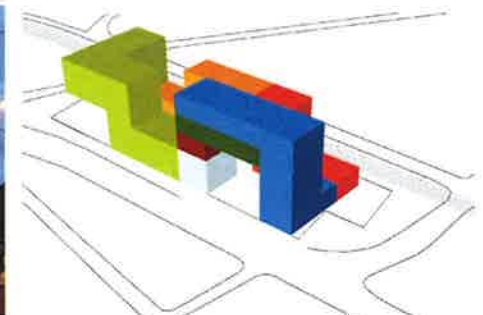


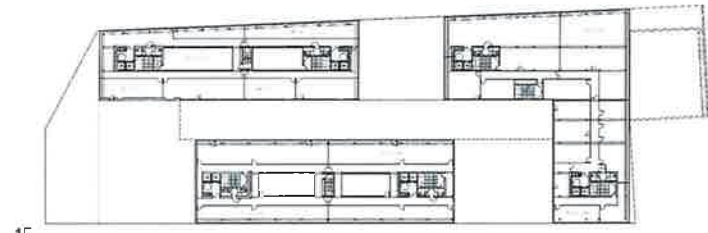
Site Plan



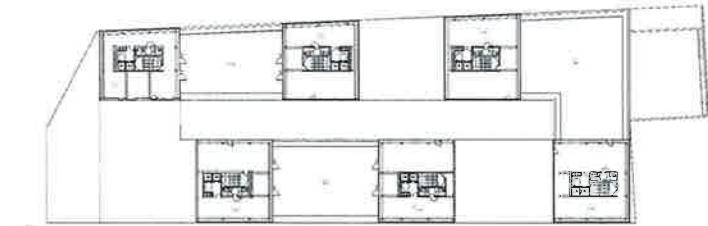
Project Brief

This office building (1,500 workstations) groups various public services, including the head office of "Saint-Etienne Metropole", a business canteen and 400 parking places. The project is like a large "Aztec serpent" rising on the lot. Its body has three identical outer faces, and an underside that is different: a skin of silvery transparent scales and a bright yellow "throat", shiny and opaque.

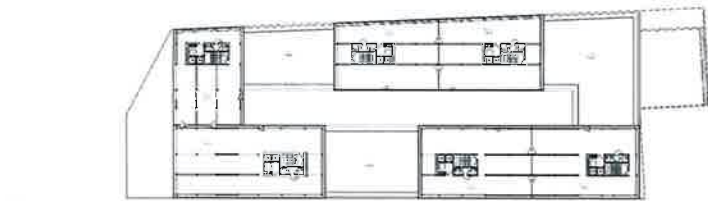




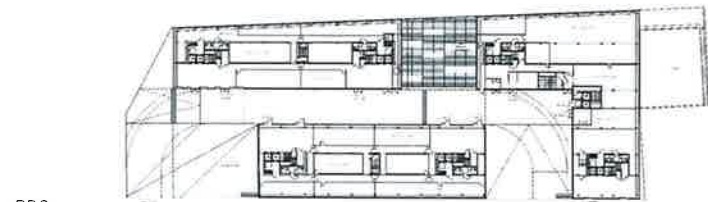
1F



4F

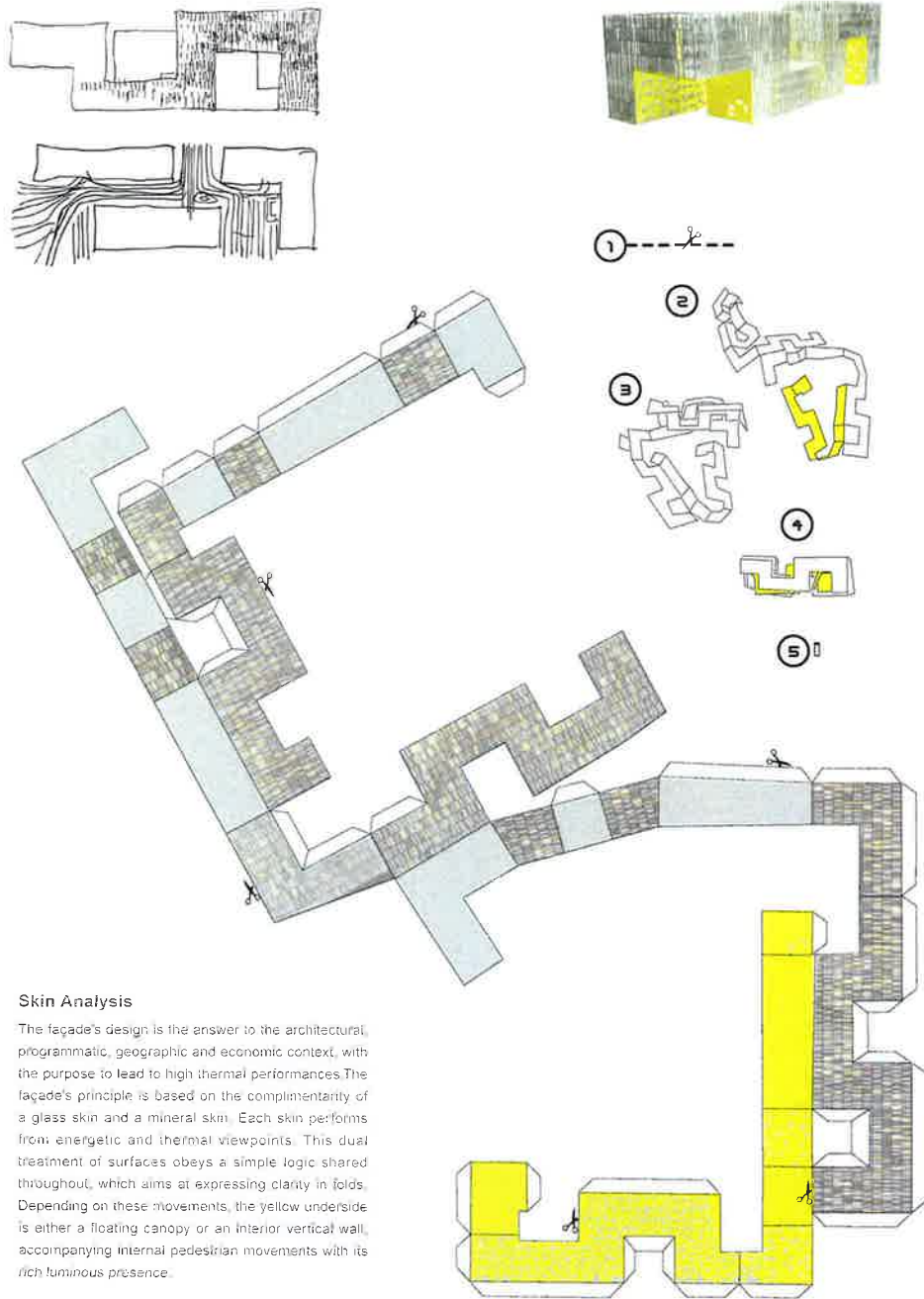


6F



RDC





Skin Analysis

The façade's design is the answer to the architectural, programmatic, geographic and economic context, with the purpose to lead to high thermal performances. The façade's principle is based on the complementarity of a glass skin and a mineral skin. Each skin performs from energetic and thermal viewpoints. This dual treatment of surfaces obeys a simple logic shared throughout, which aims at expressing clarity in folds. Depending on these movements, the yellow underside is either a floating canopy or an interior vertical wall, accompanying internal pedestrian movements with its rich luminous presence.



