



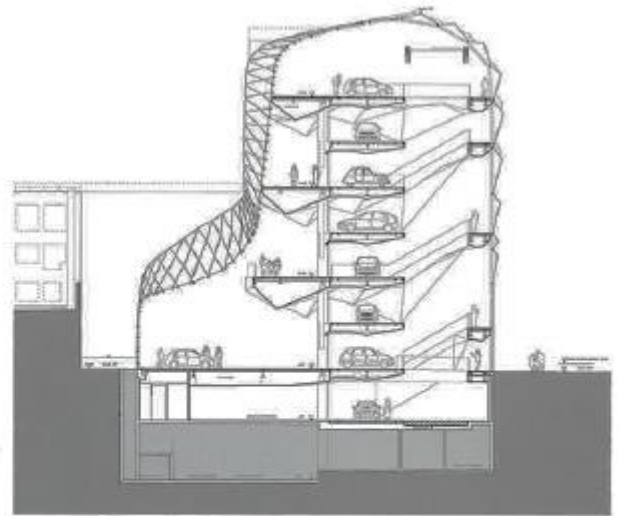
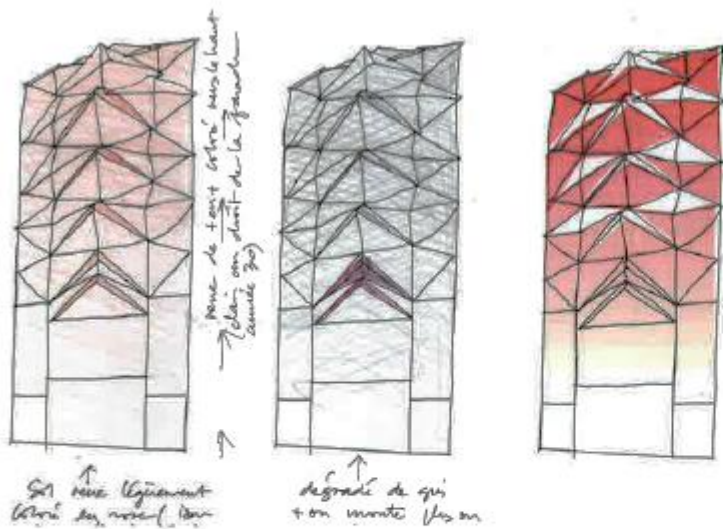
Architect
Manuelle Gautrand

Client
Automobilien Citroën

Location
Paris, France

Photographer
Philippe Rusuli, Jimmy Cotrasen

CITROËN FLAGSHIP SHOWROOM



The new Citroën showroom is at number 42 Champs Elysées; Citroën have owned the site since André Citroën set up shop there in the 1920s. His original showroom was beautiful, the interior was extremely theatrical, and the glass rectangular façade beautifully proportioned, very minimalist and contemporary.

On street level, the glass façade is minimalist and demonstrates a certain rigour with its flatness and use of large rectangles, but the introduction of the chevron signals the start of some much more original design, with lozenge shapes, triangles and chevrons. The higher up the building looks, the more three-dimensional it becomes with the introduction of prisms that bring new depths to the design. Finally, the top section of the new building is like a great glass sculpture, recalling origami in its complexity. The chevron remains present yet discreet, becoming less defined and more suggested in the overall form, and almost subliminal, in this exciting project, midway between a building and a fine art sculpture.

The designers originally conceived the use of red, the brand's signature colour, in the glass panels but they decided it would be too bright from the outside. There were some concerns about the building not harmonising with its neighbours on the Champs Elysées, so they've created a filter that on first sight, masks the red colour from the exterior. This totally original filter, which is cleverly constructed inside the

finished glass, also minimises the heat of the sun passing through, and will also create a opalescent pearly white atmosphere inside the building. The red colour can still be seen from the inside of the building, reflecting the brand's signature colours.

The main role of the building is as a place to show cars, and designers wanted to express this primary aim in the form of the space itself. The shape of the building itself is inspired by the shape of a car, it's not an object with a front, a roof or a rear, but something moulded with curves and fluidity, that links the front, roof and rear with a continuity that is like the form of a car itself, creating unity between the place and the product, and makes a rich and complex interior.

To display the cars themselves, attached to a central mast are eight circular platforms each of which takes a car. The platforms are 6 m in diameter, and each one turns to show off the car on all sides and has a mirrored base to reflect the car below. Around the display, the public is led by a series of staircases and walkways that spiral past the cars. The designers were trying to create something like a museum or a cultural building, a space which would encourage people to spend time there. There is a panoramic lift to take people to the top of the building, and they are able to enjoy an exceptional view of both Paris and the sky. 📍





